

## Sensory Map

Welcome to Hurstville Museum & Gallery. You can use this sensory map to identify sensory friendly spaces in the Museum & Gallery. Some spaces are quieter or brighter than others, or have a strong smell, and have been indicated on this map.

You can use this map to help you plan your visit.

Please keep in mind that the exhibitions in the Main Gallery, Dragon's Lair Gallery and Snapshot Gallery change regularly. Due to this, these parts of the map may not be up to date on the day of your visit.

For more information and resources visit:

[www.georgesriver.nsw.gov.au/HMG](http://www.georgesriver.nsw.gov.au/HMG)

# Sensory information by room

## Entrance Hall

### Auditory

- You can hear people and traffic coming from outside
- You may hear people in the other rooms
- This is a loud space on busy days

### Tactile

- There is a seat in this space

### Visual

- There is some natural light in this space
- The lights are bright in this space

### Smell

- You might smell things that are outside

## Room 1

### Auditory

- This is a loud space on busy days
- The wood floor makes noises as you move across it

### Tactile

- There are draws you can open and look inside

### Visual

- The lights are bright in this space
- There are lots of pictures and text on the walls

### Smell

- This space smells of varnished wood

# Sensory information by room

## Room 2

### Auditory

- This is usually a quiet space
- You may hear people in the Entrance Hall

### Tactile

- There is a touch screen monitor to interact with
- There are draws you can open and look inside

### Visual

- The lights are bright in this space
- There are lots of objects and text in this space

## Snapshot Gallery

### Auditory

- This space can be loud on busy days
- You may hear people and traffic coming from outside
- You may hear people in the Entrance Hall

### Tactile

- There are seats in this space
- There are colouring in activities in this space

### Visual

- The lights are dimmer in this space
- There is some natural light in this space
- The content of this room changes but there are photographs and text on the walls to look at

# Sensory information by room

## Main Gallery

### Auditory

- There may be videos making noise in this space
- You may hear people and traffic from outside and the Entrance Hall
- The floor may creak when you move across it

### Tactile

- There may be seats in this space
- There may be touch screens to interact with

### Visual

- The lights are usually bright in this space
- The content of this room changes but there are objects and text spread throughout the space

## Dragon's Lair Gallery

### Auditory

- This is usually a quiet area
- You may be able to hear people or videos from the Main Gallery and Entrance Hall

### Tactile

- There may be seats in this space

### Visual

- The lights are usually bright in this space
- The content of this room changes but there are artworks spread through the space

# Sensory information by room

## Art Room

This room is only open during art programs

### Auditory

- This room can be loud when there are people in here
- You may hear people in the Entrance Hall or Snapshot Gallery

### Tactile

- You can create artworks in this room
- There are seats in this room

### Visual

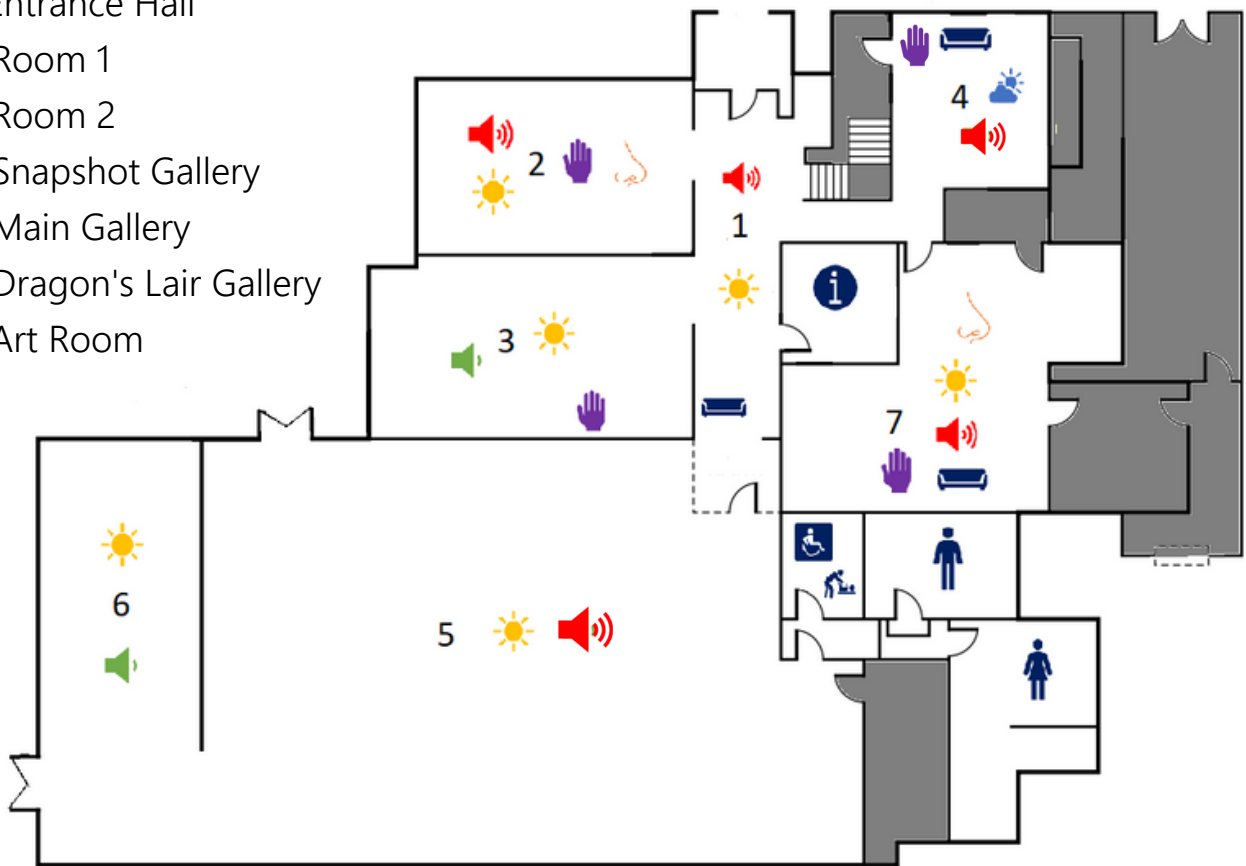
- There are many objects stored in this room
- There are different coloured art supplies in this room to look at and use

### Smell

- This room smells of paint, plasticine, and other art supplies

# Sensory map

- 1. Entrance Hall
- 2. Room 1
- 3. Room 2
- 4. Snapshot Gallery
- 5. Main Gallery
- 6. Dragon's Lair Gallery
- 7. Art Room



## Legend



Bright lights



Low lights



Loud



Quiet



Interactive



Strong  
smell



Staff only area

## Amenities



Information  
desk



Seating



Men's  
toilets



Ladies'  
toilets



Accessible  
toilet



Baby changing  
table

For more information you can contact us at:

Telephone: 9330 6444

Email: [museumgallery@georgesriver.nsw.gov.au](mailto:museumgallery@georgesriver.nsw.gov.au)

Hurstville Museum & Gallery

14 MacMahon Street, Hurstville, NSW 2220

Opening Hours: Tuesday – Saturday 10am - 4pm

Sunday 2pm – 5pm

Other times by appointment.

[www.georgesriver.nsw.gov.au/HMG](http://www.georgesriver.nsw.gov.au/HMG)